



GAT MONTHLY MEMBERSHIP PROGRESS REPORT

Results as of: 3/31/2023

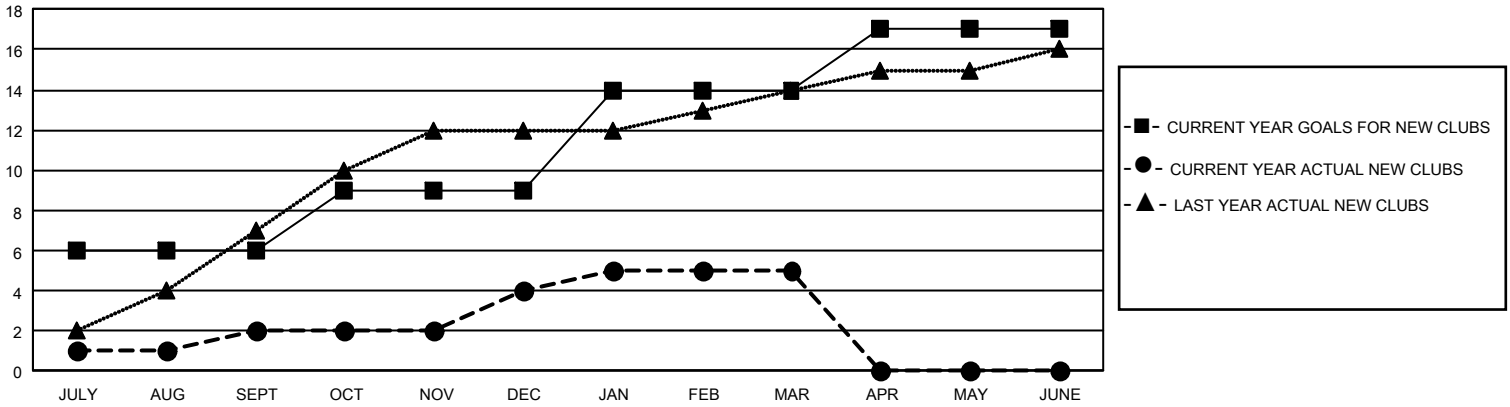
GMT Constitutional Area 5 - K, Group L

REPORT DOES NOT INCLUDE CLUBS IN UNDISTRICTED AREAS.

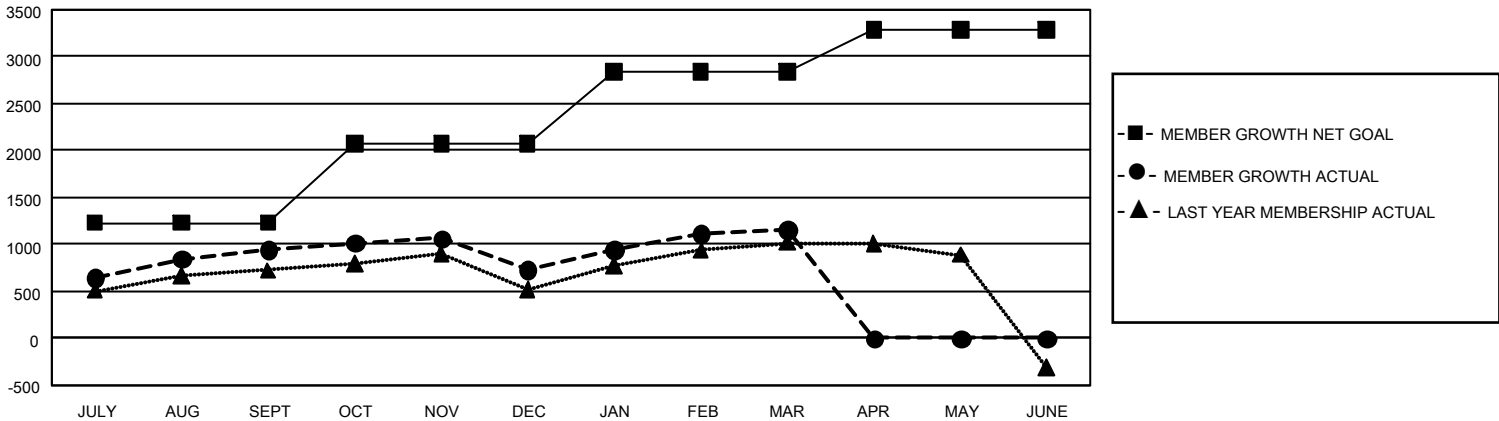
Clubs			
RESULTS FOR 2022-2023			
QUARTER	NEW CLUB GOAL	NEW CLUBS	DROPPED CLUBS
JULY/AUG/SEPT	18	2	4
OCT/NOV/DEC	9	2	2
JAN/FEB/MAR	15	1	2
APR/MAY/JUNE	9	0	0

Members			
RESULTS FOR 2022-2023			
QUARTER	MEMBER GROWTH NET GOAL	MEMBER GROWTH ACTUAL	DROPPED MEMBERS ACTUAL (including transfers)
JULY/AUG/SEPT	1230	1,770	745
OCT/NOV/DEC	840	727	931
JAN/FEB/MAR	765	1,013	531
APR/MAY/JUNE	450	0	0

GOALS AND ACTUAL NEW CLUBS CUMULATIVE



GOALS AND ACTUAL MEMBERS CUMULATIVE



DROPPED CLUBS: 8	506 CLUBS OF 622 ADDED 1 OR MORE NEW MEMBERS	<u>GENDER DISTRIBUTION</u>	
		MALE 18,801 (73.94%) FEMALE 6,628 (26.06%) NON BINARY 0 (0.00%) PREFER NOT TO ANSWER 0 (0.00%)	
<u>DROPPED MEMBERS</u>		CLICK HERE FOR CUMULATIVE MEMBERSHIP DATA	TOTAL FAMILY UNIT MEMBERS 924
DECEASED 78 CLUB CANCELLED 71 OTHER 2,058 TOTAL 2,207			FAMILY MEMBERS PAYING HALF DUES 527